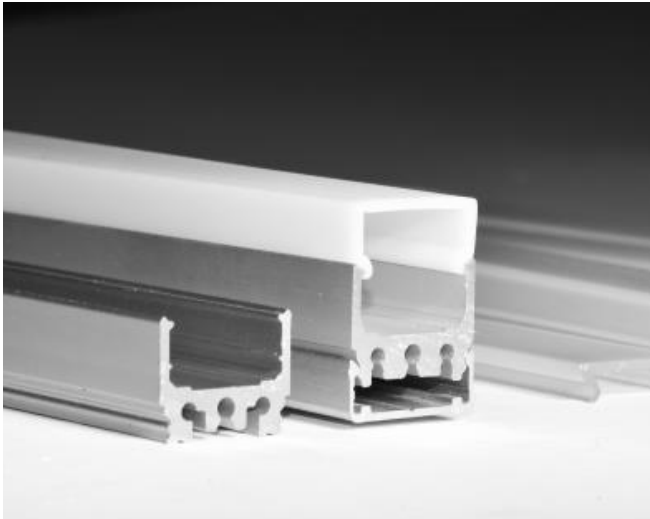


## Architape Pro AP-04

### Indoor LED light fixture



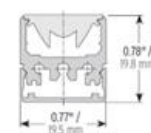
Architape AP-04 is a lightweight aluminium fixture designed for long-term indoor professional lighting applications.

Thanks to its opal or diffuse cover options, the Architape AP-04 profile can create a continuous light effect without any dark spots for direct view lighting as well as efficient diffuse light for indirect applications.

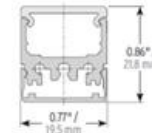
This profile is the ideal match for our Architape Pro LED tapes. These white, tuneable white and RGB+W LED tapes are available in a wide range of colour temperatures (CCT) and with a colour rendering index (CRI) of up to 98+.

### Specifications

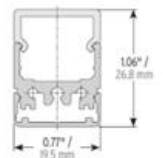
- Width: 19.5 mm (0.77")
- Height: 19.8 mm (0.78") with 10° optic
  - 21.8 mm (0.86") with low square cover
  - 26.8 mm (1.06") with high square cover
- Length: up to 2 m
- Light output ratio:
  - 10° optic:
  - Opal: 60% transmission
  - Diffuse: 70% transmission
- TC temperature: up to 75 °C
- Operating temperature: -25 °C to +50 °C
- LED engine: up to 35 W/m



With 10° Optic



With Low Square Diffuser



With High Square Diffuser

### Cover options



10° optic



Low square diffuser  
(70% transmission)



High square diffuser  
(70% transmission)



Low square opal  
(60% transmission)



High square opal  
(60% transmission)



## Mounting bracket

The Architape Pro AP-MNT is a flush mounting bracket for the AP-02 and AP-04 fixtures. It is available either as 50 mm clips or lengths of up to 2 m to match the desired segment length.



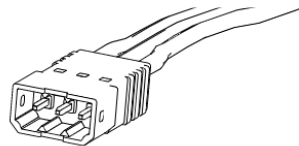
## End caps

Description	Product code
High square end cap	AE-PO4-HCAP
High square end cap with hole	AE-PO4-HCAP-H
Low square end cap	AE-PO4-LCAP
Low square end cap with hole	AE-PO4-LCAP-H
End cap for 10° optic	AE-PO4-10DCAP
End cap for 10° optic with hole	AE-PO4-10DCAP-H

## Connectors

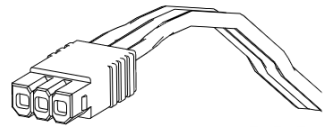
### Male connector

*For indoor use only*



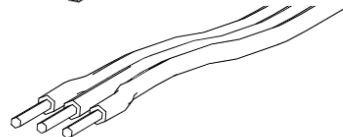
### Female connector

*For indoor use only*



### Lead wires end

*Any connector can be used*



Connector	Dimensions	Male		Female	
		Length	Width	Length	Width
WHITE 2-pin	Length	0.61"	15.5 mm	0.59"	15 mm
	Width	0.263"	6.7 mm	0.24"	6.1 mm
	Height	0.196"	5 mm	0.196"	5 mm
TW 3-pin	Length	0.61"	15.5 mm	0.59"	15 mm
	Width	0.362"	9.2 mm	0.338"	8.6 mm
	Height	0.196"	5 mm	0.196"	5 mm
RGB 4-pin	Length	0.61"	15.5 mm	0.59"	15 mm
	Width	0.648"	16.5 mm	0.437"	11.1 mm
	Height	0.204"	5.2 mm	0.196"	5 mm
RGBW 5-pin	Length	0.61"	15.5 mm	0.59"	15 mm
	Width	0.559"	14.2 mm	0.535"	13.6 mm
	Height	0.196"	5 mm	0.196"	5 mm

## Architape Pro LED tapes

Architape AP-04 fixtures support a wide range of Architape Pro LED tapes. Delivering high-quality light output based on Nichia LEDs, Architape Pro LED tapes are available in white, tuneable white or RGB+W, across a wide range of colour temperatures and up to a very high colour rendering index of 98+.

### Architape Pro 50

These white light LED strips are available in a range of power outputs and at fixed colour temperatures from 2000K to 6500K.

#### *Specifications*

- 56 Nichia LEDs/m
- Operating voltage: 24 VDC
- Power consumption: 4.8 W/m – 19.2 W/m
- Colour rendering index (CRI): 80, 90, 98+-
- Colour temperature: 2000K-6500K (CRI 80, 90), 3000-5000 (CRI 98+)

### Architape Pro 100

Offering highly homogenous light output, these white light LED strips are available in a range of power outputs and at fixed colour temperatures from 2000K to 6500K.

#### *Specifications*

- 112 Nichia LEDs/m
- Operating voltage: 24 VDC
- Power consumption: 4.8 W/m – 19.2 W/m
- Colour rendering index (CRI): 80, 90, 98+-
- Colour temperature: 2000K-6500K (CRI 80, 90), 3000-5000 (CRI 98+)

### Architape Pro TW & TW2

These tuneable white light LED strips can be adjusted to any colour temperature from 2000K to 6500K.

#### *Specifications*

- 56, 70 or 112 (TW2) Nichia LEDs/m
- Operating voltage: 24 VDC
- Power consumption: 9.6 W/m – 33.6 W/m
- Colour rendering index (CRI): 80, 90, 98+-
- Colour temperature: 2000K-6500K (CRI 80, 90), 3000-5000 (CRI 98+)

### Architape Pro RGB+W

These coloured LED strips can be set to any colour and are available in white light colour temperatures from 2000K to 6500K.

#### *Specifications*

- 48 RGB + 48 white Nichia LEDs/m
- Operating voltage: 24 VDC
- Power consumption: 14.4 W/m – 24.0 W/m
- Colour rendering index (CRI): 80, 90, 98+-
- White colour temperature: 2000K-6500K (CRI 80, 90), 3000-5000 (CRI 98+)